

Human Progress and Human Services 2035

For

Foresight in Government

Joint PSFN, FFCOI, APF Meeting

July 27, 2018

Supported by

THE KRESGE FOUNDATION



Vulnerability 2030
Scenarios on Vulnerability in the United States

Earlier IAF Scenarios

Public Health 2030:
A Scenario Exploration

Primary Care



Vulnerability

Primary Care 2025
A Scenario Exploration



Supported by grants from
Robert Wood Johnson Foundation
THE KRESGE FOUNDATION

Public Health



Supported by a grant from
THE KRESGE FOUNDATION

Creating & Using the Human Services 2035 Scenarios

Create community ownership

Develop assumptions and forecasts

Build Scenarios

Explore implications

Develop recommendations

Create preferred futures

The Human Services 2035 Effort

National Scenarios

National Scenario Workshop

State & Local Efforts

States

- Connecticut
- Mississippi

Counties

- Jefferson County (CO)
- San Diego County (CA)
- Montgomery County (MD)

Cities

- San Antonio (TX)
- Memphis (TN)
- Richmond (VA)

Scenario Zones in IAF's Aspirational Futures

Visionary/Surprisingly Successful

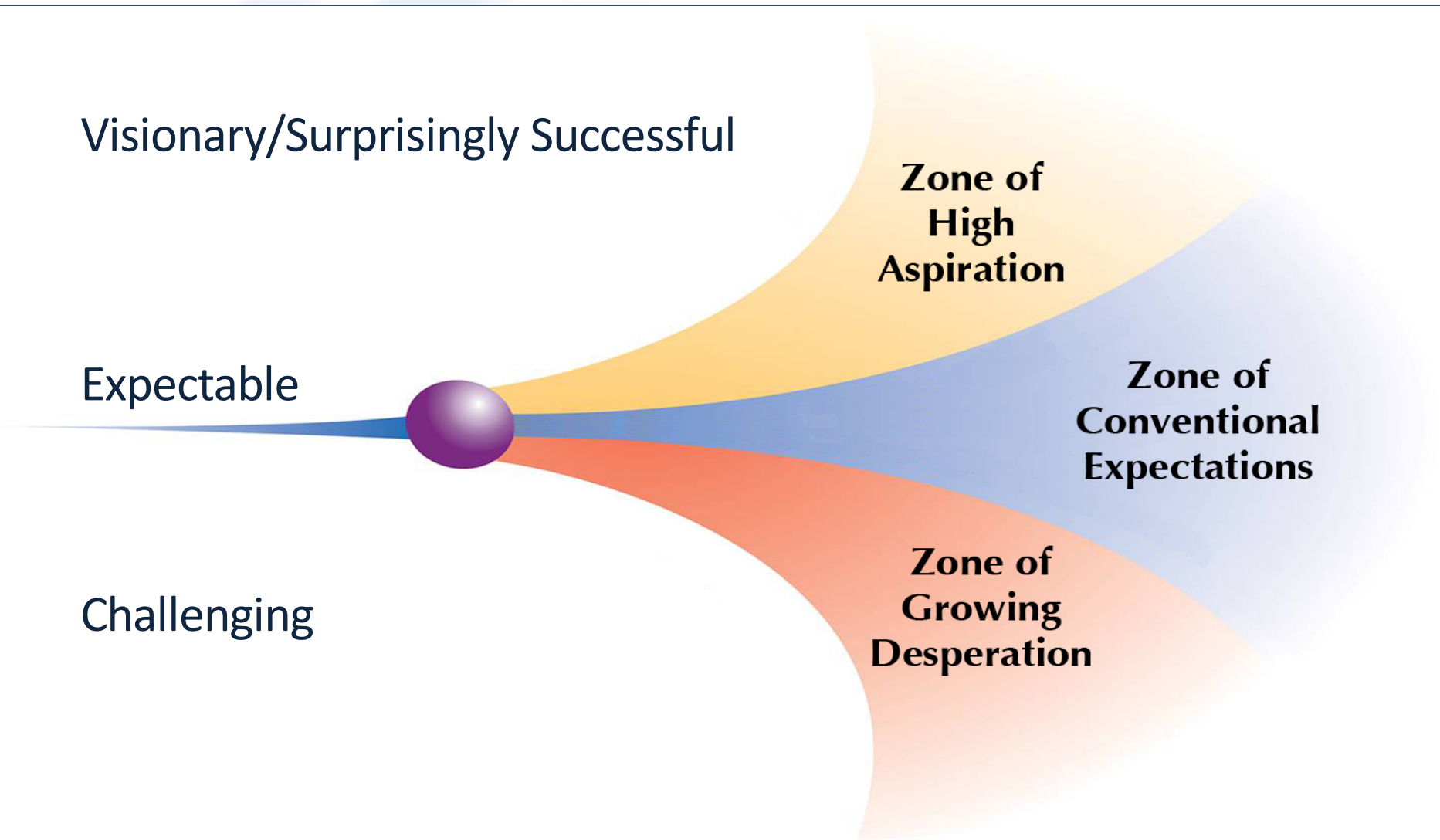
Zone of High Aspiration

Expectable

Zone of Conventional Expectations

Challenging

Zone of Growing Desperation



Economy/ Poverty

MACROENVIRONMENT

**U.S.; STATES &
CITIES**

**Operating
Environment**

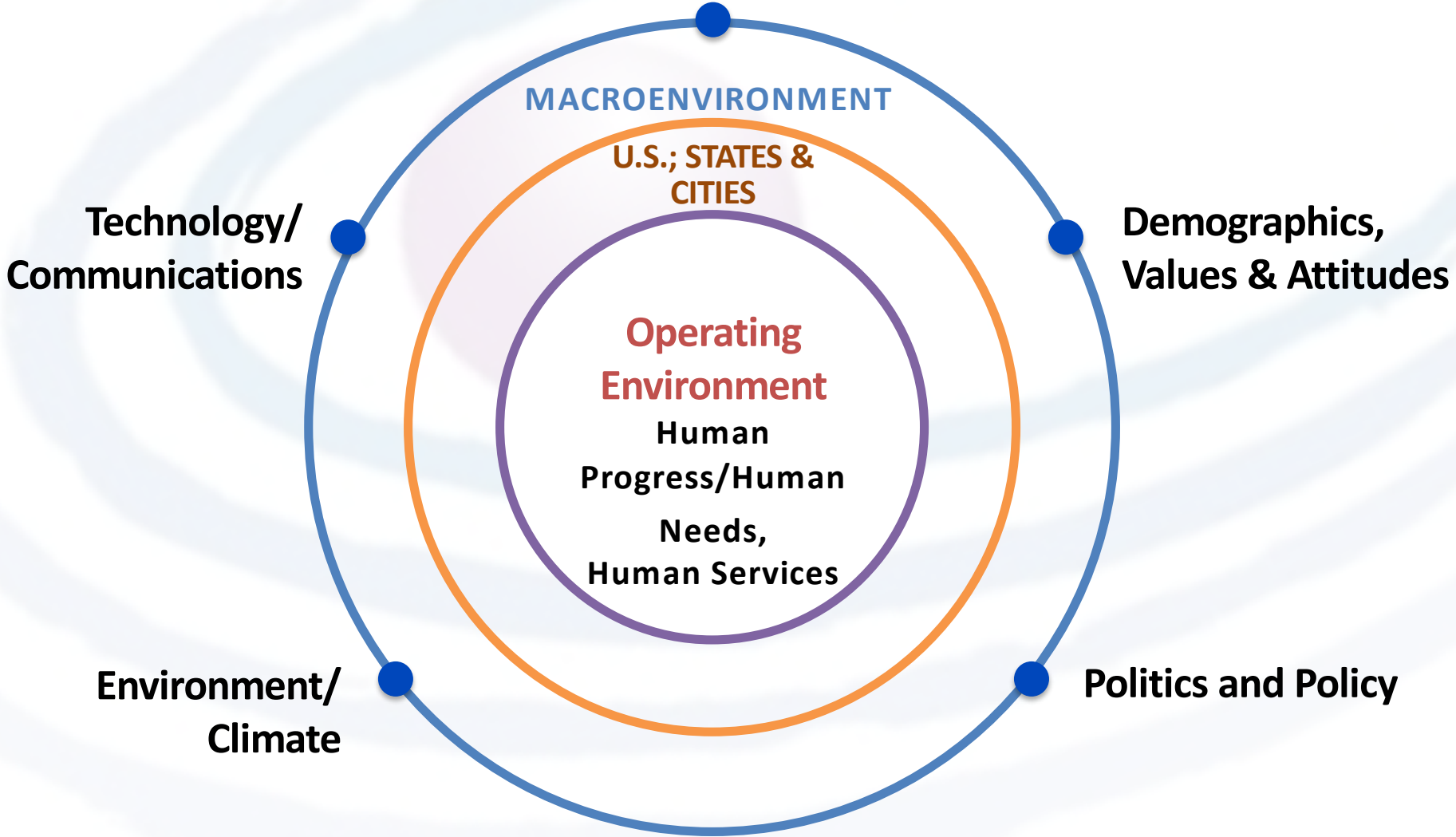
**Human
Progress/Human
Needs,
Human Services**

**Demographics,
Values & Attitudes**

Politics and Policy

**Technology/
Communications**

**Environment/
Climate**



Specific Human Service Areas

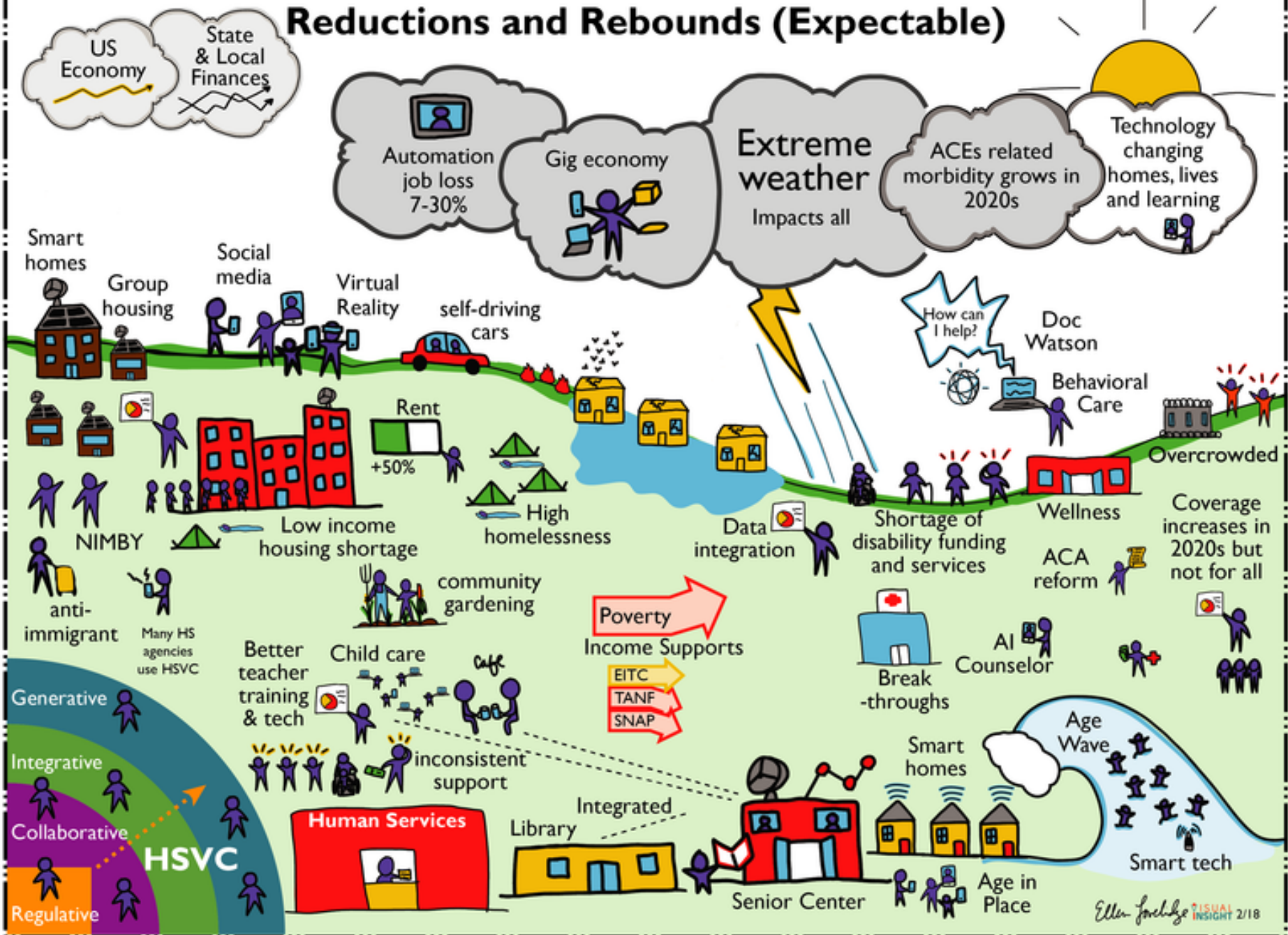
- Child, Youth and Family Services
- Aging Services
- Disability Services
- Behavioral Health
- Housing Services
- Income Supports



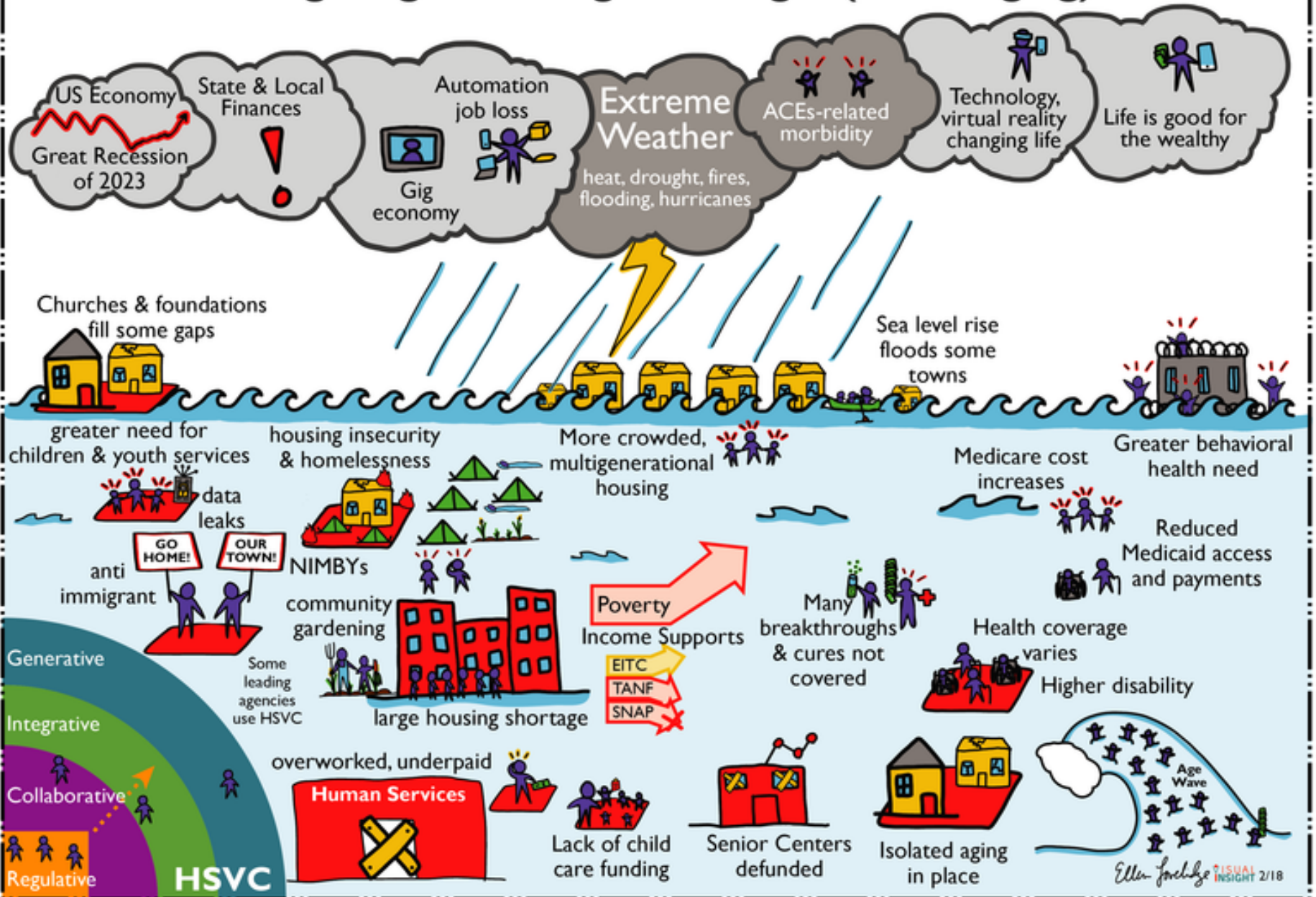
The Human Progress and Human Services 2035 Scenarios

1. Reductions and Rebounds (Expectable)
2. Navigating Unending Challenges (Challenging)
3. Building Human Potential (Visionary A)
4. Thriving Communities (Visionary B)

Scenario I Reductions and Rebounds (Expectable)



Scenario 2 Navigating Unending Challenges (Challenging)



Scenario 3 Building Human Potential (Visionary)



Scenario 4 Thriving Communities (Visionary)



| | Scenario 1: Expectable | Scenario 2: Challenging | Scenario 3: Visionary A | Scenario 4: Visionary B |
|------------------------------|-----------------------------------|------------------------------------|------------------------------------|------------------------------------|
| National | Reductions and Rebounds | Navigating Unending Challenges | Building Human Potential | Thriving Communities |
| Connecticut | The Land of Steady Habits | YOYO: You're on Your Own | North Star | New Charter Oak |
| Mississippi | Mississippi Rising | We Fall Down, But We Get Up Again | Opportunity for All | Generous, Empathic and Helpful |
| Jefferson County, CO | The Good, the Bad and the Ugly | Dark Side of the Moon | Field of Dreams | Epic 14'er |
| San Diego County, CA | Work in Progress | Troubled Times | Living Well | Thrive |
| Montgomery County, MD | Cloudy | Big Storms | Beautiful Days | Blue Skies |
| Memphis, TN | A Tale of Two Cities | Challenges Shape Caring | Rock and Roll Again | Abundance, Good Work, Good Caring |
| Richmond, VA | Older Dominion | A Tale of Two Cities | Monuments of Equity | Come One, Come All |
| San Antonio, TX | The Least We Will Do | Even Scarier | Fiesta | SA 2020 Realized |

Results

- Learning
- Enhanced partnerships
- Vision/Aspirations review
- Strategy check; robustness testing
- Recommendations

Recommendation Areas

1. Promote equity in human centered design
2. Enhance human service leadership and vision
3. Change the narrative - build public will and support with a long-term campaign around building well-being
4. Focus on Financial Capabilities and Models
5. Recognize the fundamental role that safe and stable housing plays in health and well-being
6. Anticipate Changing Job Realities, Workforce Development and “Making a Contribution”
7. Enhance Technology and Strategic Capacities

The Scenarios and Tool Kit

- The national scenarios and 8 state and local sets
 - Tool kit for communities, agencies

Are available at

<http://altfutures.org/projects/human-progress-and-human-services-2035>

Or

Google “Human Services 2035”

Thank You!

THE KRESGE FOUNDATION

